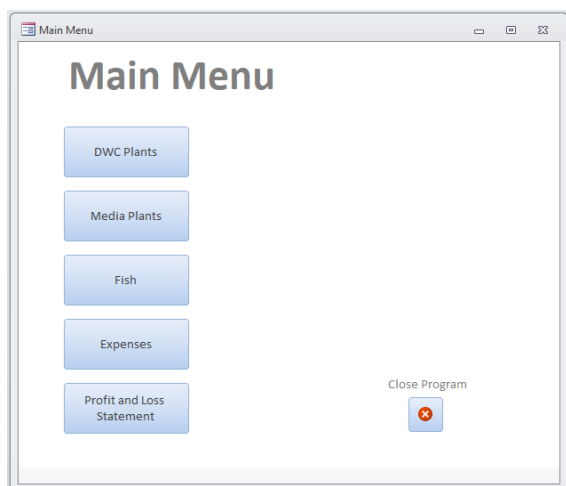


# Aquaponics Database

A free tool by The Discipleship Center.  
[www.discipleshipctr.org](http://www.discipleshipctr.org)

## The Main Menu

When you first open the Aquaponics Database, you'll see the following menu appear.



Each time you harvest for a sale, you need to enter the dollar amount in the New Sale Price, and the date the sale takes place in the New Sale Date. Once you are satisfied, click on the Enter Sale Button .



Enter Sale

You'll notice upon each sale you will see your Sales amount for that raft increase.

Once you are done with the raft and have cleared it out for a new production run, fill in the Date Harvested.

There is also a place for Description to take notes on this raft for your records later.

You will be working with multiple rafts in a DWC system, so to scroll through different rafts, use the Record selector at the bottom. (previous and next or use the search box to go to a specific number)

## DWC Plants

We'll start with the DWC Plants item. Each time you transplant a seedling to a Deep Water Culture Bed, you should number your raft and track what day you "planted" the transplants.

A screenshot of a web application window titled "DWC Plants". The window has a light blue header with the title "DWC Plants" and a small image of a green plant in a raft. Below the header, there are several input fields: "Raft Number" (a dropdown menu), "Date Planted" (a date picker showing 4/1/2018), "Date Harvested" (a date picker showing 4/30/2018), "Plant Type" (a dropdown menu showing "Salad Mix"), "Description" (a text area), "New Sale Price" (a text input), "New Sale Date" (a date picker showing 9/7/2018), and "Sales" (a text input showing "\$32.00"). There is a green "Enter Sale" button with a hand icon. At the bottom, there are navigation buttons: "First", "Previous", "Next", "Last", "New", and "Delete". A status bar at the very bottom shows "Records: 1 of 2" and a search box.

## Media Plants

Next we have Media Plants for items in media beds. Each bed should be numbered, and you can name the Plant Type. Even if you have more than one of the same plant, you will track all of that same plant per media bed on one record.

When you plant or transplant into a media bed, record the bed number, the plant type, and the date planted. There is a section for notes here for your records as well.

Just as with the DWC Plants, when you make a sale, fill in the new sale box with the dollar amount, and the Sale Date with the date of the sale and then click the Enter Sale button.



Enter Sale

## Fish

While the fish may be the nutrient source for the Aquaponics Vegetables, don't treat your fish as only an expense. Treat fry as an expense, but growing fish as a commodity.

When your fingerlings have grown to the size that you add them to your production tank(s), enter them all as a batch number (or tank number) and their introduction date.

When you remove fish for sale, enter the dollar amount in the New Sale box and the date of the sale in the New Sale date and click on the Enter sale button.



Enter Sale

Once you are done growing a tank and purge it of the remaining fish, enter it into the removal date.

## Expenses

Expenses should be the easiest to fill out. Click on the new button; enter the name of the expense, the date of the expense and the price of the expense. Whether this is fish food, a nutrient supplement, new fry, seeds, whatever the expense is, enter it here.

If you make a mistake, just scroll through the expenses and then modify the wrong entry.

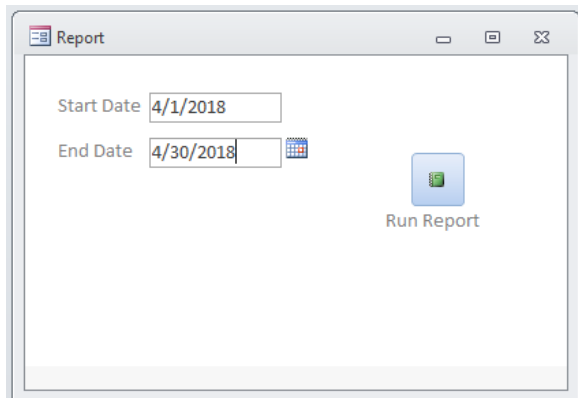
Once you go to a different record, your changes are saved automatically.

## Profit and Loss Statement

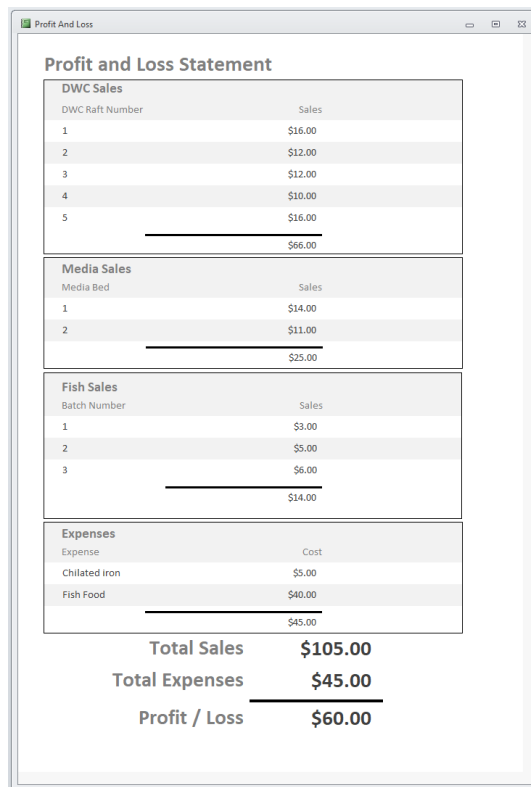
The whole point to the database is to be able to produce a profit and loss statement accurately.

Since an Aquaponics system can be run 365 days, depending on your greenhouse setup, some of the expenses associated with production may not show up on the same P&L statement. I suggest running the P&L each month, each quarter, and each year to get a good overview on how profitable you are.

When you click on the Profit and Loss Statement, you are given a box asking for the start date and the end date. Fill in the start date for the beginning of the recorded period and fill in the end date for the end of the recorded period. Finally click on the run report button.



You should end up with a report preview similar to this one...



DWC Sales	
DWC Raft Number	Sales
1	\$16.00
2	\$12.00
3	\$12.00
4	\$10.00
5	\$16.00
	<hr/>
	\$66.00

Media Sales	
Media Bed	Sales
1	\$14.00
2	\$11.00
	<hr/>
	\$25.00

Fish Sales	
Batch Number	Sales
1	\$3.00
2	\$5.00
3	\$6.00
	<hr/>
	\$14.00

Expenses	
Expense	Cost
Chillated iron	\$5.00
Fish Food	\$40.00
	<hr/>
	\$45.00

Total Sales	\$105.00
Total Expenses	<hr/>
	\$45.00
Profit / Loss	<hr/>
	\$60.00

You'll get a total sales by raft in the DWC Sales, a total sales by bed in the Media Bed section, and a total sales by batch number for fish, finally you'll get a total of expenses and a breakdown by name of expenses, and a tally showing either a profit or loss.

To print or save this report, click on the <Ctrl> button and the <P> button at the same time to bring up the print menu. Choose to print to your actual printer, or choose Microsoft print to PDF to save as a pdf file. **(NOTE: if you do not have Microsoft print to PDF, you may have to download a 3<sup>rd</sup> party software to save prints as a pdf. I recommend "Primo PDF" which you can google to find out more about.)**

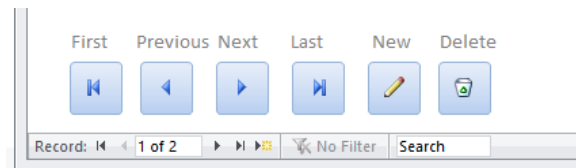
Using this P&L statement will help you determine which crops sell better, or faster, and if you are charging enough money for them.

You will physically see which items cannot be sold fast enough and are discarded as unusable.

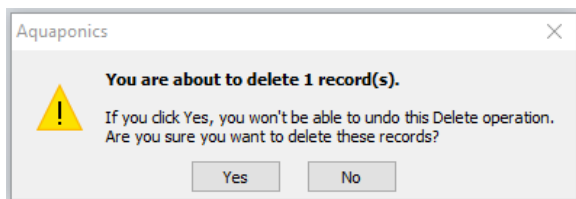
## Clearing the program for your use

Now that you've seen the program in action, you'll want to clear my sample data out of the program.

In each menu you'll see a navigation panel like this one...



On each record you want to delete, just click on the delete button in the program. You'll get a pop-up asking if you want to delete the record. Just click Yes to confirm.



Once you clear the records from the DWC Plants, the Media Plants, the Fish, and all the Expenses, then you are ready to start inputting your own data.

While I set this up in anticipation using our Nelson and Pade system, I realize that some people may be using NFT's, Misting systems, or Foggers.

If you find that you may need additional menus for these, or have other suggestions, feel free to contact us on our website contact page.

[https://www.discipleshipctr.org/visit\\_us](https://www.discipleshipctr.org/visit_us)

## Legal Disclaimer

As much as I would like to skip this part, it is a necessary part of 21<sup>st</sup> century lunacy.

All databases and spreadsheets created by Mitchel DeYoung and distributed through The Discipleship Center Inc. website are given freely and meant to be a blessing to those who use them but are given with the express warning that we do not have any warranties expressed or implied, we do not have any data recovery tools or storage and we will not be held liable for any loss of data or unexpected results from using our free tools. Your use of these free tools is an acknowledgement of this legal disclaimer and agreement to it.